

TECHNICAL DATA

Aluminum Body Pressure Rating: 210 bar
Ductile Iron Body Pressure Rating: 350 bar

Cavity:
Refer to 2A3
* Refer to Winner Cartridge Valves Catalog.

| | |
|--------------|-------------------------|
| Ductile Iron | 3.32 kg(WITHOUT VALVES) |
|--------------|-------------------------|

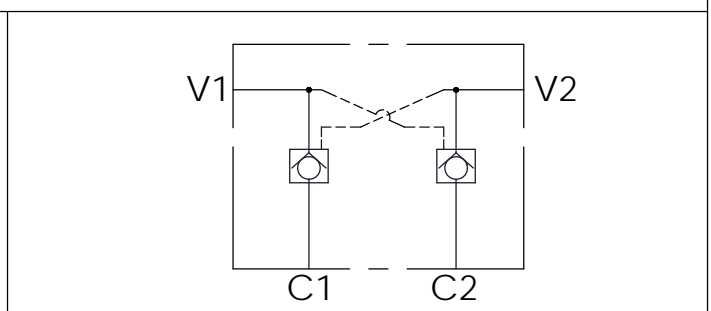
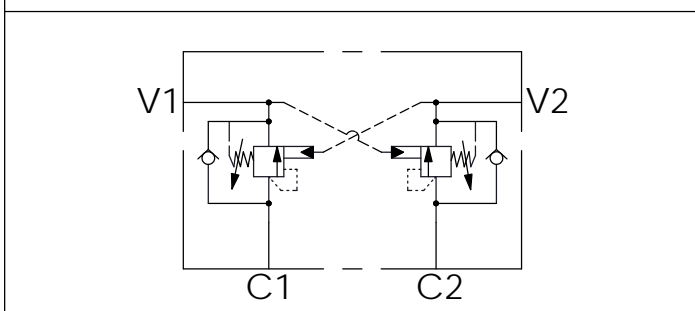
* If you need the special specification.
Please contact us.

| Y | SELECTION FOR V2 PORT CONTROL | |
|--|-------------------------------|--|
| 2A3 | CAVITY ONLY(WITHOUT VALVE) | |
| CB3H | CB2A33HL (3:1 , 280bar) | |
| CO20 | CO2A3020N (2.0bar) | |
| The selection is only example. Please refer to Winner Cartridge Program and to select the appropriate valves and manifolds assembly in accordance with request function (flow 、 pressure 、 ... etc.) | | |

| X | SELECTION FOR V1 PORT CONTROL | |
|-------------|-------------------------------|--|
| 2A3 | CAVITY ONLY(WITHOUT VALVE) | |
| CB3H | CB2A33HL (3:1 , 280bar) | |
| CO20 | CO2A3020N (2.0bar) | |

| Z | PORT SIZE | |
|------------|----------------|----------------|
| | PORTS V1,V2 | PORTS C1,C2 |
| G06 | G 3/4" | G 3/4" |
| | | |
| | | |

HYDRAULIC CIRCUITS(WITH VALVES)



Ordering Code: ML-120-CDW-CB3H-CB3H-S01

Ordering Code: ML-120-CDW-CO20-CO20-S01