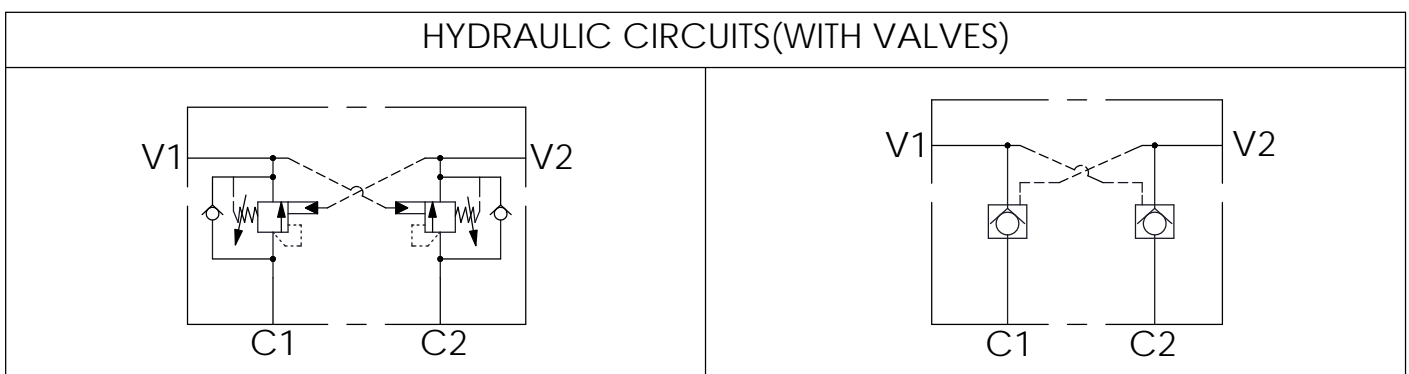


TECHNICAL DATA	
Aluminum Body Pressure Rating:	210 bar
Ductile Iron Body Pressure Rating:	350 bar
Cavity:	Refer to 2A3
* Refer to Winner Cartridge Valves Catalog.	
Aluminum	1.21 kg(WITHOUT VALVES)
* If you need the special specification. Please contact us.	

Y	SELECTION FOR V2 PORT CONTROL	
2A3	CAVITY ONLY(WITHOUT VALVE)	
CB3H	CB2A33HL (3:1 , 280bar)	
CO20	CO2A3020N (2.0bar)	
The selection is only example. Please refer to Winner Cartridge Program and to select the appropriate valves and manifolds assembly in accordance with request function (flow 、 pressure 、 ... etc.)		

X	SELECTION FOR V1 PORT CONTROL	
2A3	CAVITY ONLY(WITHOUT VALVE)	
CB3H	CB2A33HL (3:1 , 280bar)	
CO20	CO2A3020N (2.0bar)	

Z	PORT SIZE	
	PORTS V1,V2	PORTS C1,C2
G06	G 3/4"	G 3/4"



Ordering Code: ML-120-CDW-**CB3H-CB3H**-A01

Ordering Code: ML-120-CDW-**CO20-CO20**-A01