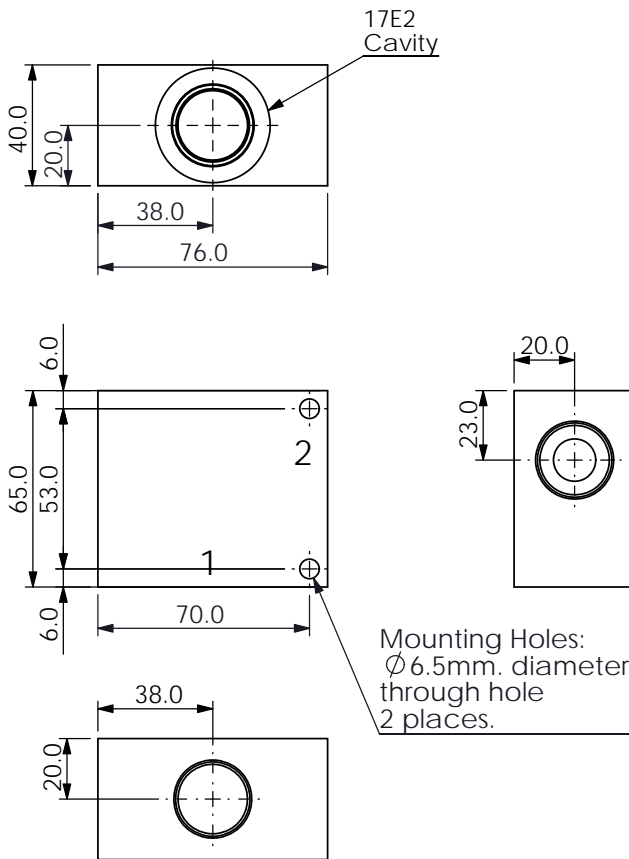
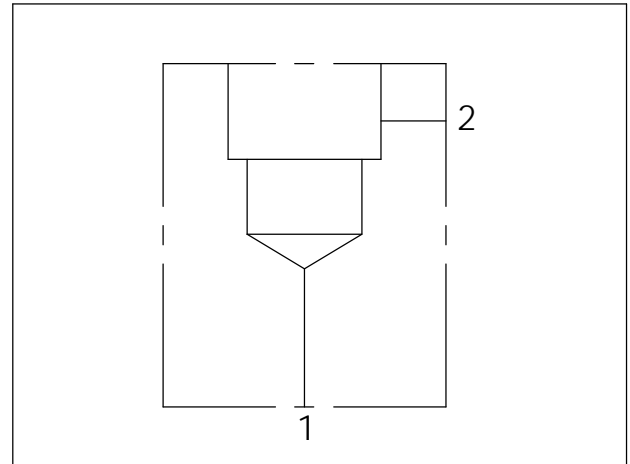


Ordering Code: **ML-17E2-X-Y 01-Z**



UNIT:mm



TECHNICAL DATA

Aluminum Body Pressure Rating: 210 bar
Ductile Iron Body Pressure Rating: 350 bar

Cavity:

Refer to 17E2

* Refer to Winner Cartridge Valves Catalog.

Aluminum	0.42 kg(WITHOUT VALVES)
Ductile Iron	1.2 kg(WITHOUT VALVES)

* If you need the special specification. Please contact us.

PORT SIZE

X	PORT SIZE		
	PORT 1	PORT 2	
P06	3/4"PT	3/4"PT	

Y BODY MATERIAL

A	HIGH-STRENGTH ALUMINUM	
S	DUCTILE IRON	

Z CARTRIDGE VALVES SELECTION

	WITHOUT VALVE	
CV03	CV17E2203N(60LPM,0.3bar)	
NV0N	NV17E20NL(350bar)	
EP01	EP17E2A01N05 , 70LPM,350bar (NORMALLY CLOSED,WITHOUT COIL)	
EP02	EP17E2A02N05 , 70LPM,350bar (NORMALLY OPEN,WITHOUT COIL)	
COIL MUST BE ORDERED SEPARATELY (REFER TO EC-04W-X-Y-Z)		
The selection is only example. Please refer to Winner Cartridge Program and to select the appropriate valves and manifolds assembly in accordance with request function (flow 、 pressure 、 ... etc.)		