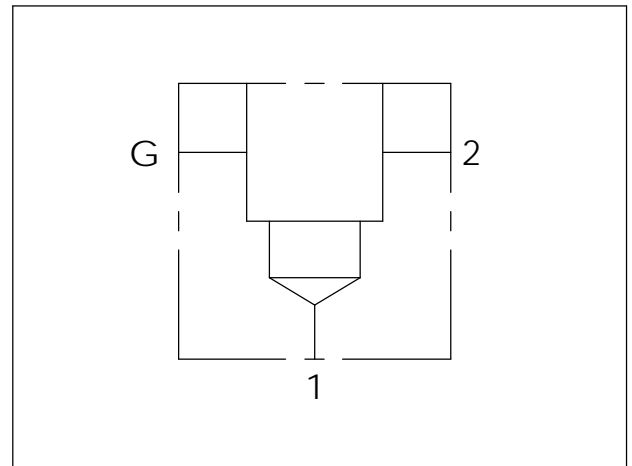
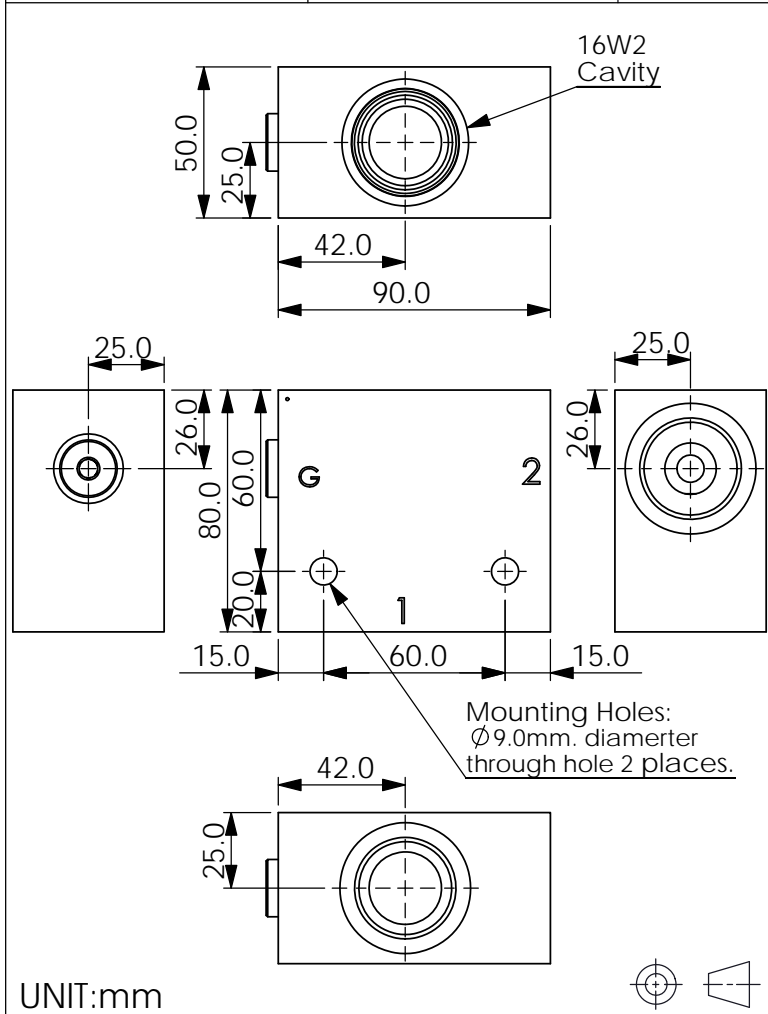


Ordering Code: **ML-16W2-X-Y 01-Z**



### TECHNICAL DATA

Aluminum Body Pressure Rating: 210 bar  
 Ductile Iron Body Pressure Rating: 350 bar

Cavity:

Refer to 16W2

\* Refer to Winner Cartridge Valves Catalog.

Aluminum	0.72 kg(WITHOUT VALVES)

\* If you need the special specification. Please contact us.



X	PORT SIZE		
	PORTS	PORT	
	1,2	G	
G08G	G 1"	G 1/4"	

Z	CARTRIDGE VALVES SELECTION	
	WITHOUT VALVE	
CV03	CV16W2003N (90LPM , 240bar)	
NV0N	NV16W20NL (350bar)	
EP01	EP16W2A01N05 , 150LPM,350bar (NORMALLY CLOSED,WITHOUT COIL)	
EP02	EP16W2A02N05 , 150LPM,350bar (NORMALLY OPEN,WITHOUT COIL)	

COIL MUST BE ORDERED SEPARATELY  
(REFER TO EC-04W-X-Y-Z)

The selection is only example. Please refer to Winner Cartridge Program and to select the appropriate valves and manifolds assembly in accordance with request function (flow 、 pressure 、 ... etc.)

Y	BODY MATERIAL	
A	HIGH-STRENGTH ALUMINUM	