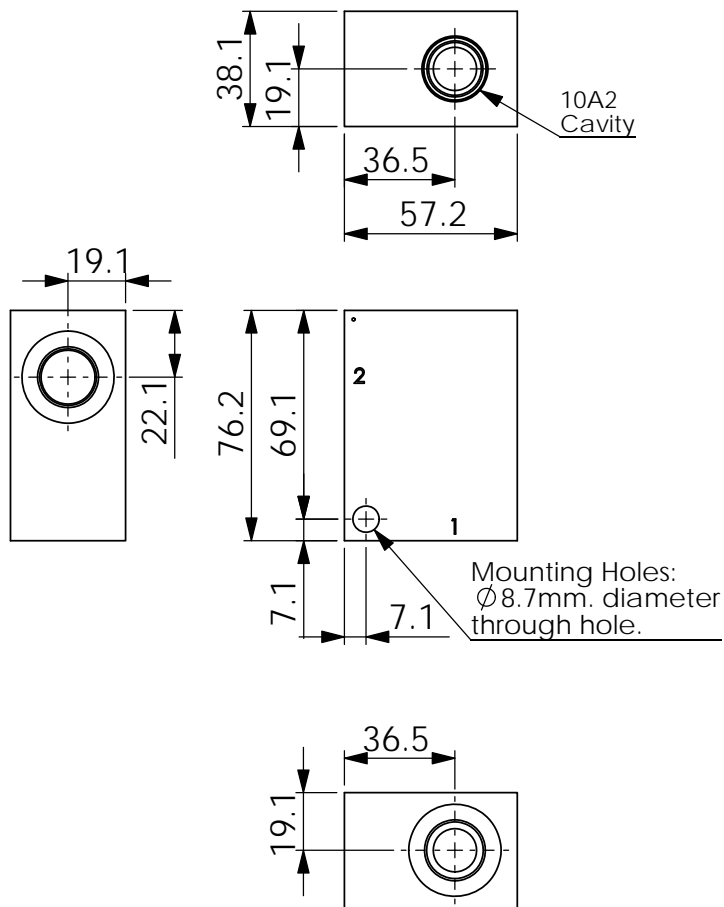
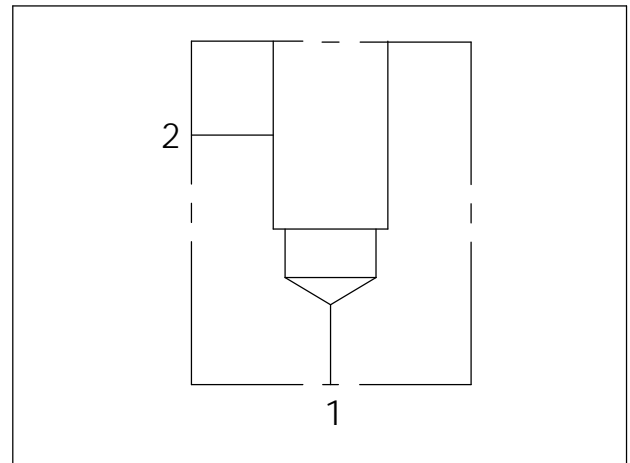
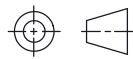


Ordering Code: **ML-10A2-X-Y 01-Z**



UNIT:mm



### TECHNICAL DATA

Aluminum Body Pressure Rating: 210 bar  
Ductile Iron Body Pressure Rating: 350 bar

Cavity:

Refer to 10A2

\* Refer to Winner Cartridge Valves Catalog.

Aluminum	0.4 kg(WITHOUT VALVES)
Ductile Iron	1.1 kg(WITHOUT VALVES)

\* If you need the special specification. Please contact us.



X	PORT SIZE		
	PORT	PORT	
	1	2	
G04	G 1/2"	G 1/2"	

Y	BODY MATERIAL	
A	HIGH-STRENGTH ALUMINUM	
S	DUCTILE IRON	

Z	CARTRIDGE VALVES SELECTION	
	WITHOUT VALVE	
RP0A	RP10A20AL(95 LPM,7~210 bar)	
RD5A	RD10A25AL(95 LPM,35~210 bar)	

The selection is only example. Please refer to Winner Cartridge Program and to select the appropriate valves and manifolds assembly in accordance with request function (flow 、 pressure 、 ... etc.)